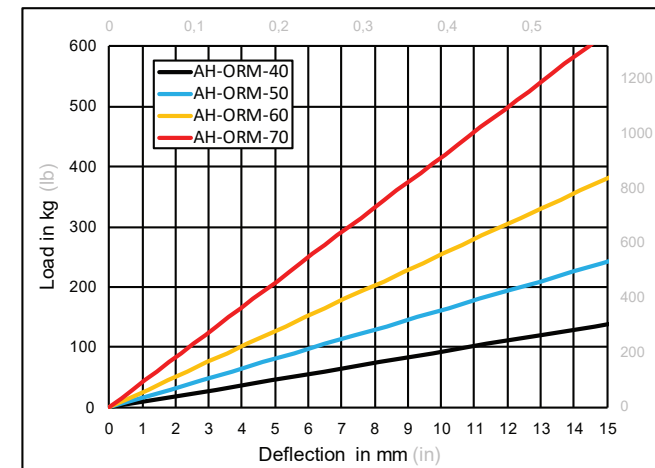



REV	DESCRIPTION	DATE	MADE BY	APP'L
1	VI curves, properties added.	15.10.2020	BK	AY



ISOLATOR PROPERTIES						
ISOLATOR TYPE	Colour Mark	Shore A Hardness	Load Capacity (kg)	Load Capacity (lb)	Max. Deflection (mm)	Max. Deflection (in)
AH-ORM-40	No Mark	40	120	265	13	0.51
AH-ORM-50	Blue	50	210	463	13	0.51
AH-ORM-60	Yellow	60	330	728	13	0.51
AH-ORM-70	Red	70	540	1190	13	0.51

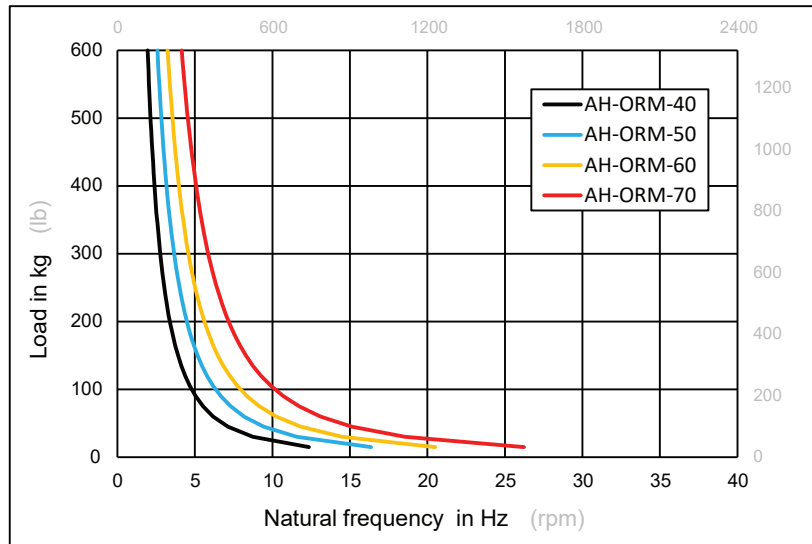
NOTES:

1. Specified Load Capacity is the max. allowable load for a single isolator and this value must not be exceeded.
2. Isolator must be installed per Installation Instruction 9180.

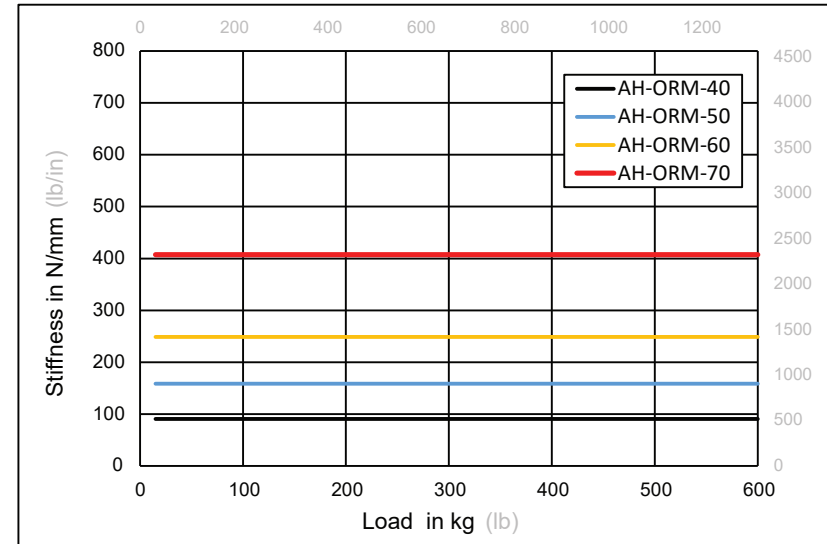
<div>POD</div> <div>PERFORMANCE OUTLINE DRAWING</div>			AH-ORM Type Open Rubber Hanger		<div>ACREFINE®</div> <div>FIXING & SEISMIC</div>		
PROJECT INFORMATION	CUSTOMER		PROJECT NAME		DRAWING No.	8276	REV
	ENGINEER				DRAWING BY	MMD	1
	DATE		LOCATION	DATE	15.10.2020		
	PROJECT No.			SCALE	NTS	Page 1/2	

Vibration Isolation and Noise Control Properties of AH-ORM Type Rubber Hanger


NATURAL FREQUENCY CURVES



STIFFNESS PROPERTIES



Disclaimer: The Information provided in these technical documents constitute a summary related to the product itself and not the intended application. We do recommend that you seek further advice regarding actual field application from our engineers or authorised partners. Latest version of this document is available to download from www.acrefine.com.

POD PERFORMANCE OUTLINE DRAWING		AH-ORM Type Open Rubber Hanger			
PROJECT INFORMATION	CUSTOMER		PROJECT NAME	DRAWING No.	8276
	ENGINEER			DRAWING BY	MMD
	DATE		LOCATION	DATE	15.10.2020
	PROJECT No.			SCALE	NTS
				REV	1
				Page 2/2	