

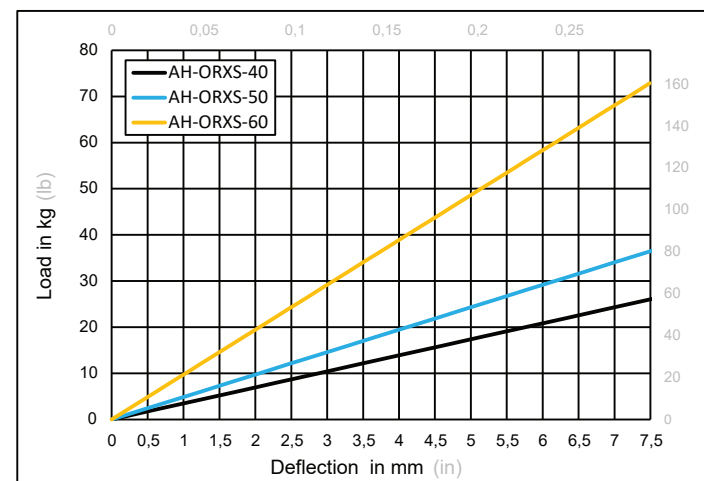
Alternative Mounting

NOTES:


1. Specified Load Capacity is the max. allowable load for a single isolator and this value must not be exceeded.
2. Isolator must be installed per Installation Instruction 9180.



REV	DESCRIPTION	DATE	MADE BY	APP'L
1	VI curves, properties added.	15.10.2020	BK	AY

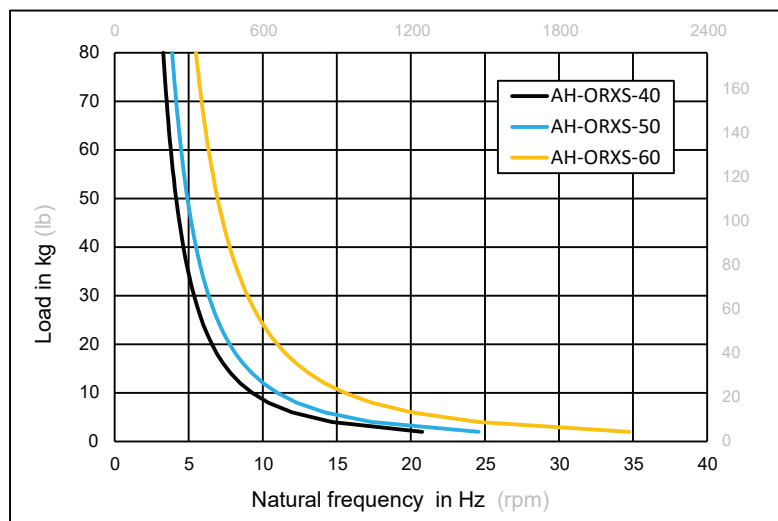
**ISOLATOR PROPERTIES**

ISOLATOR TYPE	Colour Mark	Shore A Hardness	Load Capacity (kg)	Max. Deflection (mm)	Load Capacity (lb)	Max. Deflection (in)
AH-ORXS-40	No Mark	40	25	7.2	55	0.28
AH-ORXS-50	Blue	50	35	7.2	77	0.28
AH-ORXS-60	Yellow	60	70	7.2	154	0.28

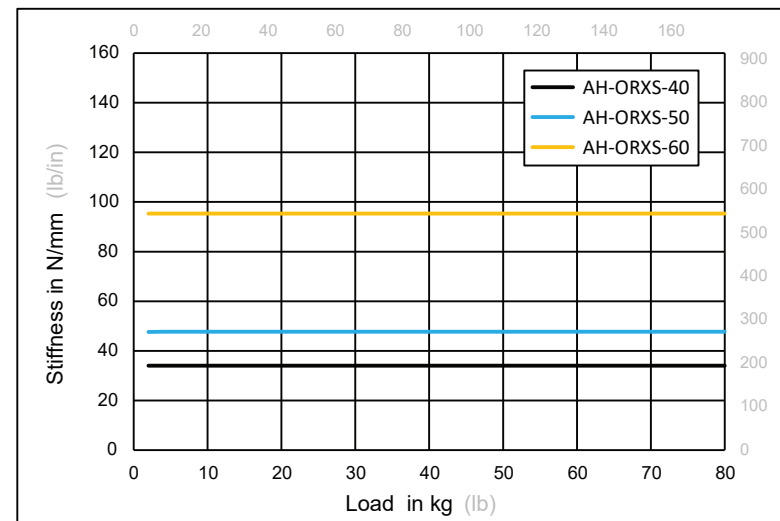
<div>POD</div> <div>PERFORMANCE OUTLINE DRAWING</div>			AH-ORXS Type Open Rubber Hanger		<div>ACREFINE® FIXING & SEISMIC</div>		
PROJECT INFORMATION	CUSTOMER		PROJECT NAME		DRAWING No.	8278	REV
	ENGINEER				DRAWING BY	MMD	1
	DATE		LOCATION	DATE	15.10.2020		
	PROJECT No.			SCALE	NTS	Page 1/2	

Vibration Isolation and Noise Control Properties of AH-ORXS Type Rubber Hanger

NATURAL FREQUENCY CURVES



STIFFNESS PROPERTIES



Disclaimer: The Information provided in these technical documents constitute a summary related to the product itself and not the intended application. We do recommend that you seek further advice regarding actual field application from our engineers or authorised partners. Latest version of this document is available to download from www.acrefine.com.

POD PERFORMANCE OUTLINE DRAWING		AH-ORXS Type Open Rubber Hanger		ACREFINE FIXING & SEISMIC	
PROJECT INFORMATION	CUSTOMER		PROJECT NAME	DRAWING No.	8278
	ENGINEER			DRAWING BY	MMD
	DATE		LOCATION	DATE	15.10.2020
	PROJECT No.			SCALE	NTS
				REV	1
				Page 2/2	