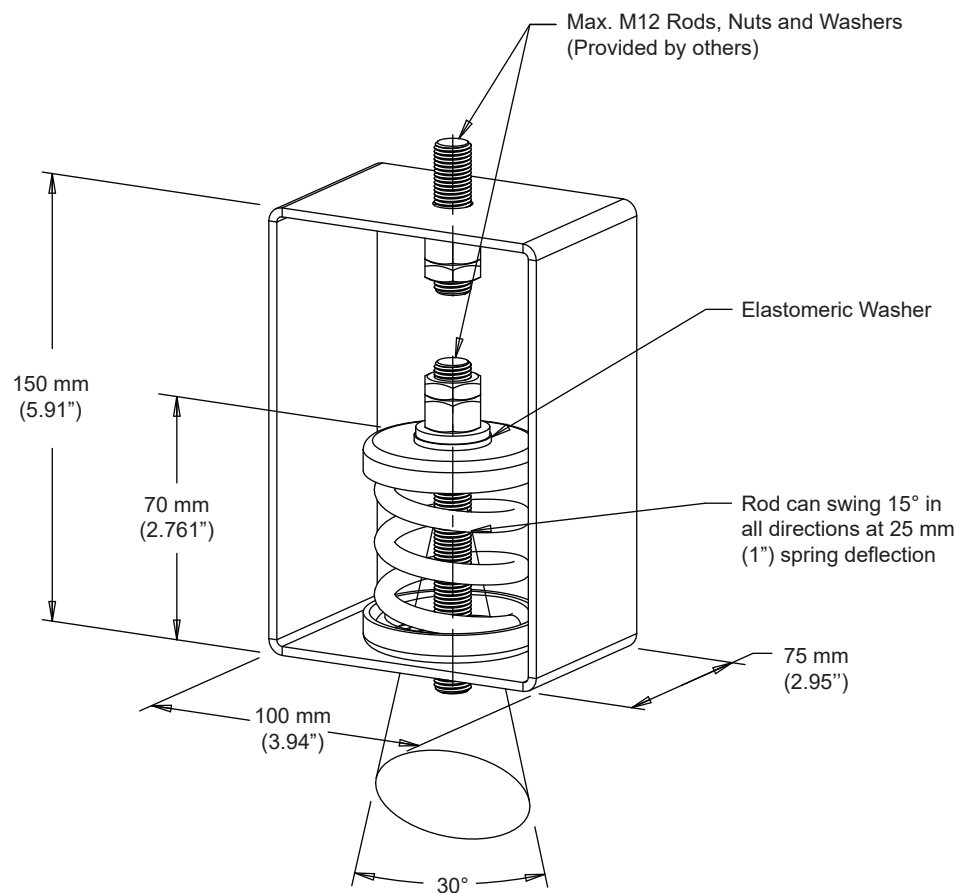


| REV | DESCRIPTION                  | DATE       | MADE BY | APP'L |
|-----|------------------------------|------------|---------|-------|
| 3   | VI curves, properties added. | 16.12.2020 | BK      | AY    |




| ISOLATOR PROPERTIES |                    |                    |                    |                    |
|---------------------|--------------------|--------------------|--------------------|--------------------|
| ISOLATOR TYPE       | Load Capacity (kg) | Load Capacity (lb) | Outer Spring Color | Inner Spring Color |
| AH-S-1A-7 *         | 7                  | 15                 | Grey               | -                  |
| AH-S-1A-12 *        | 12                 | 26                 | Green              | -                  |
| AH-S-1A-25 *        | 25                 | 55                 | Blue               | -                  |
| AH-S-1A-50 *        | 50                 | 110                | Beige              | -                  |
| AH-S-1A-70 *        | 70                 | 154                | Red                | -                  |
| AH-S-1A-95 *        | 95                 | 209                | White              | -                  |
| AH-S-1A-140 *       | 140                | 309                | Black              | -                  |
| AH-S-1A-185 *       | 185                | 408                | Yellow             | -                  |
| AH-S-1A-230         | 230                | 507                | Black              | Green              |
| AH-S-1A-275         | 275                | 606                | Yellow             | Green              |

\* Rod can swing 30 degree.

#### NOTES:

1. Specified Load Capacity is the max. allowable load for a single isolator and this value must not be exceeded.
2. Isolator must be installed per Installation Instruction 9160.

|   |             |  |              |   |            |
|---|-------------|--|--------------|---|------------|
| <b>POD</b><br>PERFORMANCE OUTLINE DRAWING |             | AH-S-1A Type Housed Spring Hanger with 1" Deflection |              |  |            |
| PROJECT INFORMATION                       | CUSTOMER    |  | PROJECT NAME | DRAWING No.   | 8225       |
|   | ENGINEER    |  |              | DRAWING BY  | MMD        |
|   | DATE        |  | LOCATION     | DATE  | 16.12.2020 |
|   | PROJECT No. |  |              | SCALE   | NTS        |
|   |             |  |              | REV   | 3          |
|   |             |  |              | Page 1/2  |            |