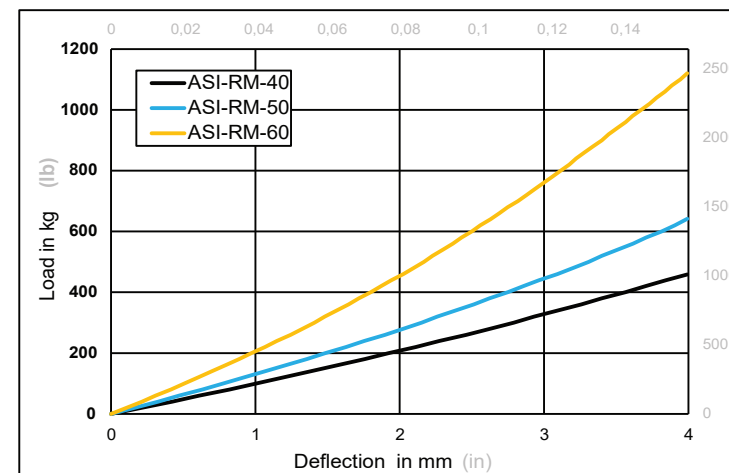
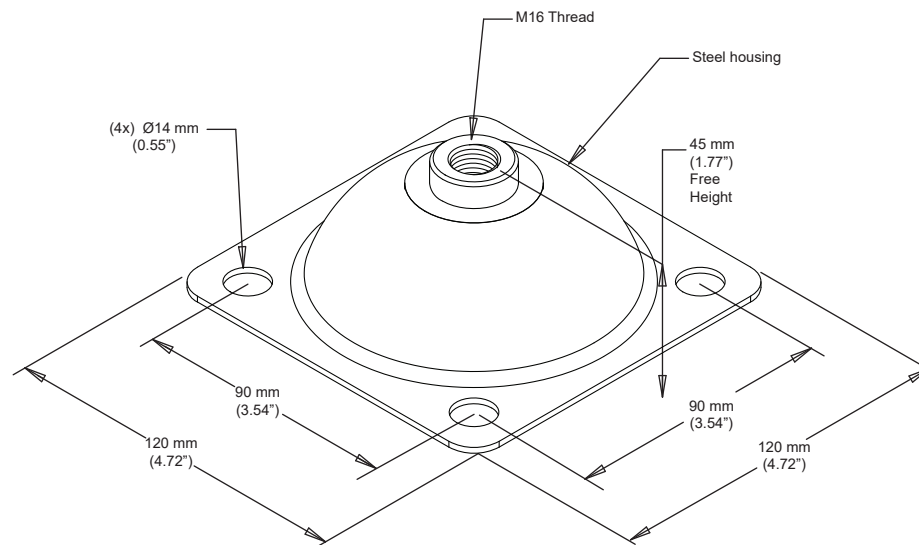



REV	DESCRIPTION	DATE	MADE BY	APP'L
3	VI curves, properties added.	12.10.2020	BK	AY



ISOLATOR TYPE	ISOLATOR PROPERTIES					
	Colour Mark	Shore A Hardness	METRIC		IMPERIAL	
			Nominal Deflection (mm)	Load Capacity (kg)	Nominal Deflection (in)	Load Capacity (lb)
ASI-RM-40	No Mark	40	3.4	380	0.13"	838
ASI-RM-50	Blue	50		520		1146
ASI-RM-60	Yellow	60		900		1984

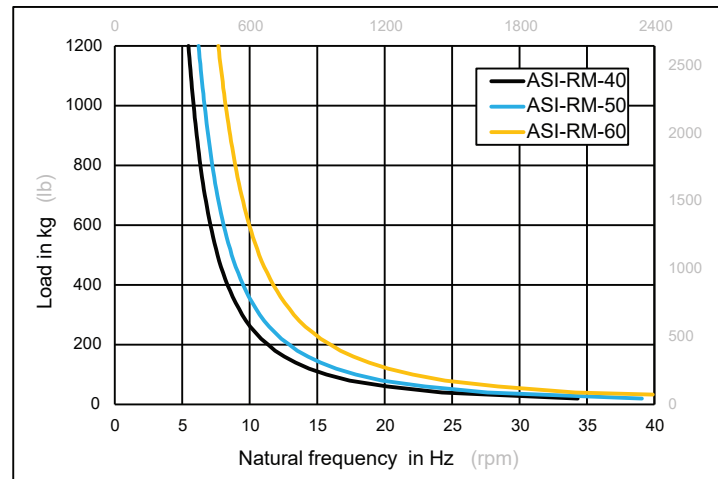
#### NOTES:

1. Isolator must be installed per Installation Instruction 9050.

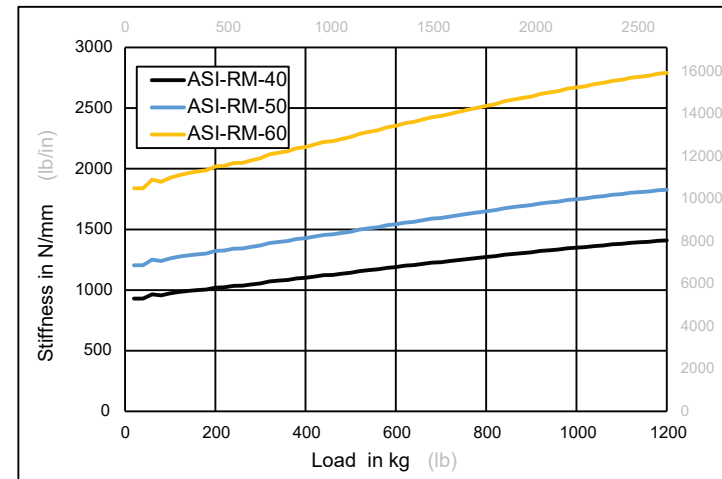
<div>POD</div> <div>PERFORMANCE OUTLINE DRAWING</div>			ASI-RM Type Restrained Rubber Mount			<div>ACREFINE® FIXING &amp; SEISMIC</div>		
PROJECT INFORMATION	CUSTOMER		PROJECT NAME			DRAWING No.	8051	REV
	ENGINEER					DRAWING BY	MMD	3
	DATE		LOCATION			DATE	12.10.2020	
	PROJECT No.					SCALE	NTS	

# Vibration Isolation and Noise Control Properties of ASI-RM Type Seismic Isolator


## NATURAL FREQUENCY CURVES



## STIFFNESS PROPERTIES



**Disclaimer:** The Information provided in these technical documents constitute a summary related to the product itself and not the intended application. We do recommend that you seek further advice regarding actual field application from our engineers or authorised partners. Latest version of this document is available to download from [www.acrefine.com](http://www.acrefine.com).

<b>POD</b> PERFORMANCE OUTLINE DRAWING		ASI-RM Type Restrained Rubber Mount			
PROJECT INFORMATION	CUSTOMER		PROJECT NAME	DRAWING No.	8051
	ENGINEER			DRAWING BY	MMD
	DATE		LOCATION	DATE	12.10.2020
	PROJECT No.			SCALE	NTS
				REV	3
				Page 2/2	